

**spectrum**

# Technical Information

## Custom Profiles, Design Service

A wide range of special profiles are available to meet the needs of the wide diverse range of installation requirements manufactured from brass, aluminium, rigid and flexible PVC.

Included in the range are:

- 17 Brass profiles
- 73 Aluminium profiles
- 20 Insert colours.

For further information contact Spectrum Floors or your local distributor.

## Installation

It is important that all fixing surfaces are sound, flat, clean and dry.

**Stair Edging** profiles should be chosen to match the type of floor covering and step shape.

Slight irregularities between the tread and profile are taken up by gap filling cartridge adhesive used with screws to prevent clatter and rocking in use. Serious irregularities must always be made good first. (*Detailed drilling procedures available on request*). It is recommended product is ordered, cut to length, pre-drilled and fixings supplied referred to as "Package Price" for ease of installation and transport.

**Stairtile** is easily cut with a 'fibre disc'. For timber treads - route and glue with cartridge adhesive. On granolithic surfaces - cast a rebate and install with epoxy adhesive. For ceramic tiles - set in conjunction with mortar adhesive.

**Elite Carpet Trim** bases are installed with cartridge adhesive and screws which should be staggered at 150mm centres.

**Elite Inserts** for nosings and trims are trimmed approximately 3mm per metre oversize. Peel away release paper from one end and position within the fixing grooves. The other end is inserted in the same way, then work towards the centre from each end removing the release paper to suit. (Minimum working temperature 18°C).

**Clip Top** bases are installed with screws and cartridge adhesive. The tops are removable and should not be adhered.

**TA Trims** are installed using removable clips set to position to suit the stair edging and adhered using cartridge adhesive.

## Maintenance

All stair edges and floor trims should be cleaned at least once a week to maintain their appearance and prevent the build-up of dirt or grease which could prove hazardous.

**Aluminium** can be lightly burnished with steel wool (mill finish).

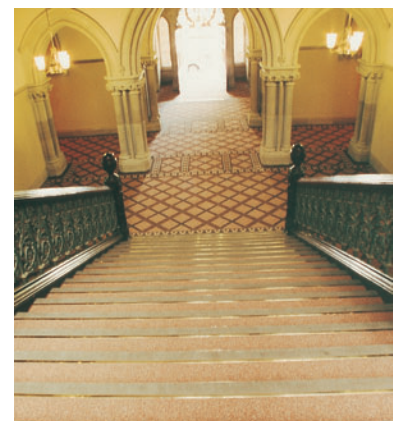
**Brass** should be cleaned regularly with a proprietary metal polish and a duster taking care not to discolour the nosing inserts.

Inserts and Stairtile are best cleaned with a mild alkaline detergent. N.B. Do not use solvent cleaners, floor sealants and polishes which will reduce the antislip properties.

Detailed installation and maintenance instructions are available from your local distributor.

Spectrum Floors product information is provided in good faith based on our knowledge and experience to date but cannot cover or anticipate every possible application or site installation. Please use your professional consultant and Spectrum Floors expressly disclaims all and any liability to any user for consequential loss or damage. Spectrum Floors reserves the right in the interests of quality and performance to improve or change all product and components without notice. Colours are subject to batch variation and to the limitations of printing in this catalogue.

**We welcome your enquiry for free samples and complimentary technical advice please contact your local distributor of Freecall 1800 888 256**



**SPECTRUM FLOORS**

393 South Road, Mile End S.A. 5031  
Ph: (08) 8354 9000

quality innovation  
experience service

Available from:

This information is correct at the time of printing 03/06 but the manufacturer reserves the right to carry out modifications aimed at product improvement without notice. © Spectrum Floors 2006

