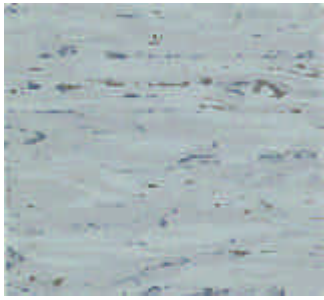


The beginning of many creative possibilities



251



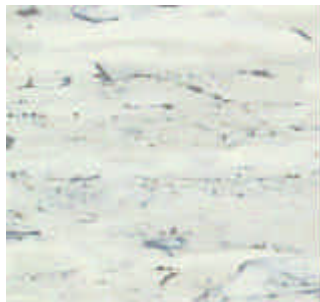
254



256



257



211

ACCORD

Inspired by nature

Accord is a range of floorings for public premises. Its earthy patterns and colours are inspired by nature. The impressive range of coordinated products allows stylish solutions with harmony.



212



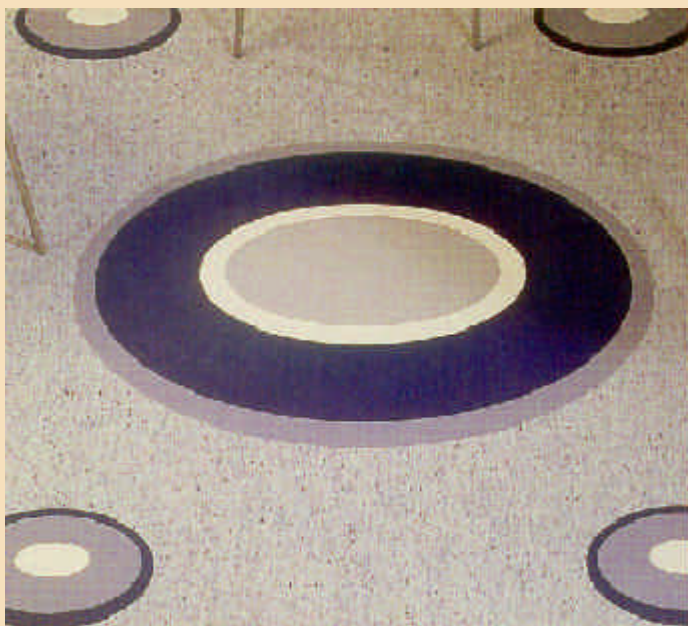
213



217



218



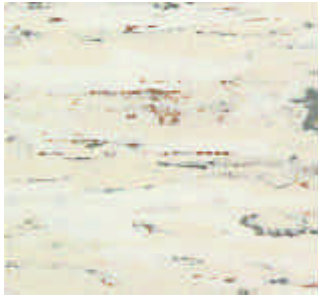
Please register your project with your Spectrum Representative to ensure material availability

COMPLIMENTARY COLOUR COORDINATED RANGES					
	Accord (74)	Accord Lux (76)	Accord Plano (72)	Podium (75)	Accord Ohmi (73)
211	✓	✓	(X)	(I)	(I)
212	✓	✓	✓	(I)	✓
213	✓	✓	(I)	(I)	(X)
217	✓	✓	(I)	(I)	(I)
218	✓	(X)	(I)	(I)	(X)
220	✓	✓	(X)	(I)	(X)
223	✓	✓	(I)	(I)	(I)
224	✓	(X)	(X)	(I)	(X)
226	✓	(X)	(I)	(I)	(X)
230	✓	✓	(I)	(I)	(X)
243	✓	✓	(I)	(I)	(I)
251	✓	✓	(I)	(I)	(X)
254	✓	✓	(I)	(I)	(I)
256	✓	(X)	(I)	(I)	(I)
257	✓	(X)	(I)	(I)	(X)
262	✓	✓	(I)	(I)	(I)
265	✓	(X)	(I)	(I)	(X)
267	✓	✓	(I)	(I)	(I)

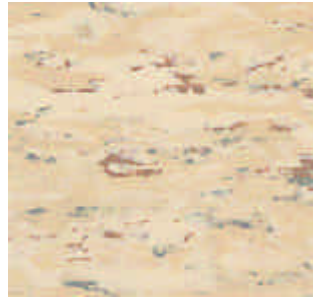
Aust. stock (I) = Special order (x) Not available

To specify colour select product code followed by colour number

PUR - for easy maintenance



220



223



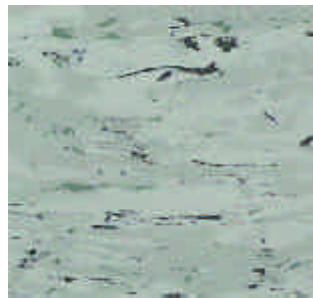
230



226



224



262



265

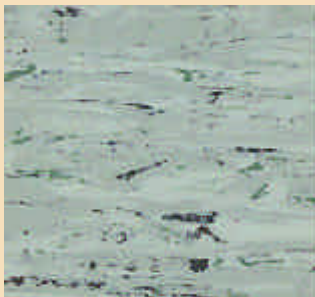


267



243

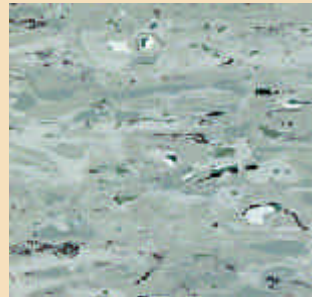
Accord is available in four further colour co-ordinated ranges



ACCORD LUX (76)
Impact-sound insulating sheet vinyl flooring with foam backing.
Applications:
Public premises subject to heavy traffic such as schools, daycare centres and old-age homes, hospitals, offices and staircases of apartment blocks.



ACCORD PLANO (72)
Applications:
As single colour flooring Plano is not recommended for the most heavily trafficked areas such as street level space and entrance halls.
(Available on special order)



PODIUM (75)
Applications:
Public premises subject to high density traffic such as department stores, shops, schools and offices where the pattern also helps to conceal traces of wear and soiling.



ACCORD OHMI (73)
Semi conductive sheet vinyl flooring.
Applications:
Operating theatres and other surgical areas in hospitals, computer rooms, telephone exchanges, ammunition factories, electronics industries, etc.